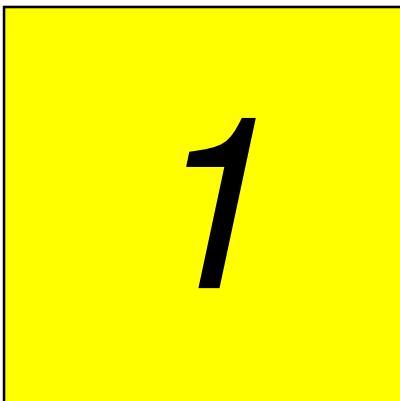
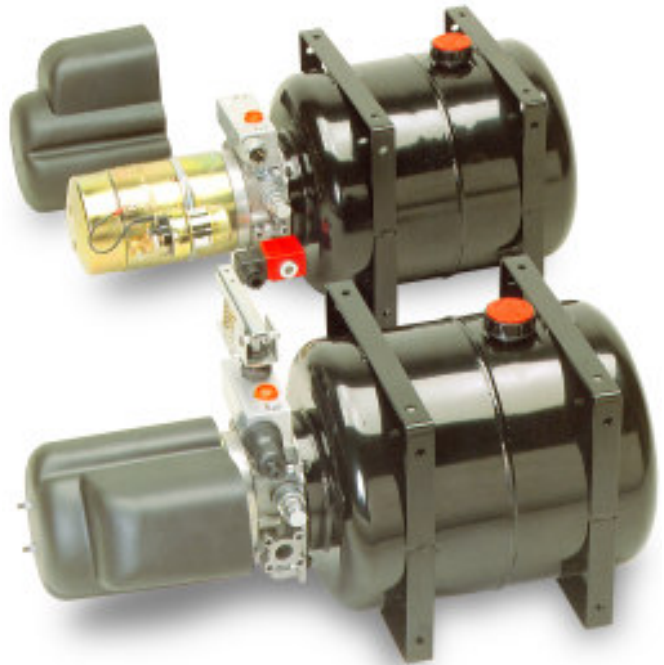


si riserva di apportare senza alcun preavviso qualsiasi modifica alle caratteristiche tecniche indicate nel presente catalogo.

reserves the right to modify the technical data mentioned into this catalogue without notice.



- Cilindri idraulici telescopici
- Culle per ancoraggio cilindri
- Supporti per cilindri
- Centraline C.C. per ribaltabili

- *Telescopic cylinders*
- *Cradles for telescopic cylinders*
- *Brackets for cylinders*
- *D.C. Power packs for dumpers*

CARATTERISTICHE MECCANICHE

Tutta la gamma della ns. produzione di cilindri, sono realizzati con tubo laminato a caldo senza saldatura, avente carico di rottura $R=N/mm^2$ 590, carico di snervamento $Rs=N/mm^2$ 460 .

L'ultimo sfilo, invece, è laminato C43. Cappello e fondello sono realizzati con stampaggio a caldo in ASTM A105m/97.

Sulla superficie esterna di tutte le sfilate è riportato un film di cromo di spessore di $0,010\pm 0,015$ mm circa, con rugosità media superficiale $Ra=0,15\pm 0,20$.

La guida delle sfilate viene assicurata da anelli in delrin, sia per lo scorrimento interno che esterno.

La tenuta del fluido viene ottenuta con guarnizioni a base di poliuretano con particolare resistenza alla deformazione permanente del fluido e all'usura, con temperature di esercizio da $-40 \div +110^\circ C$.

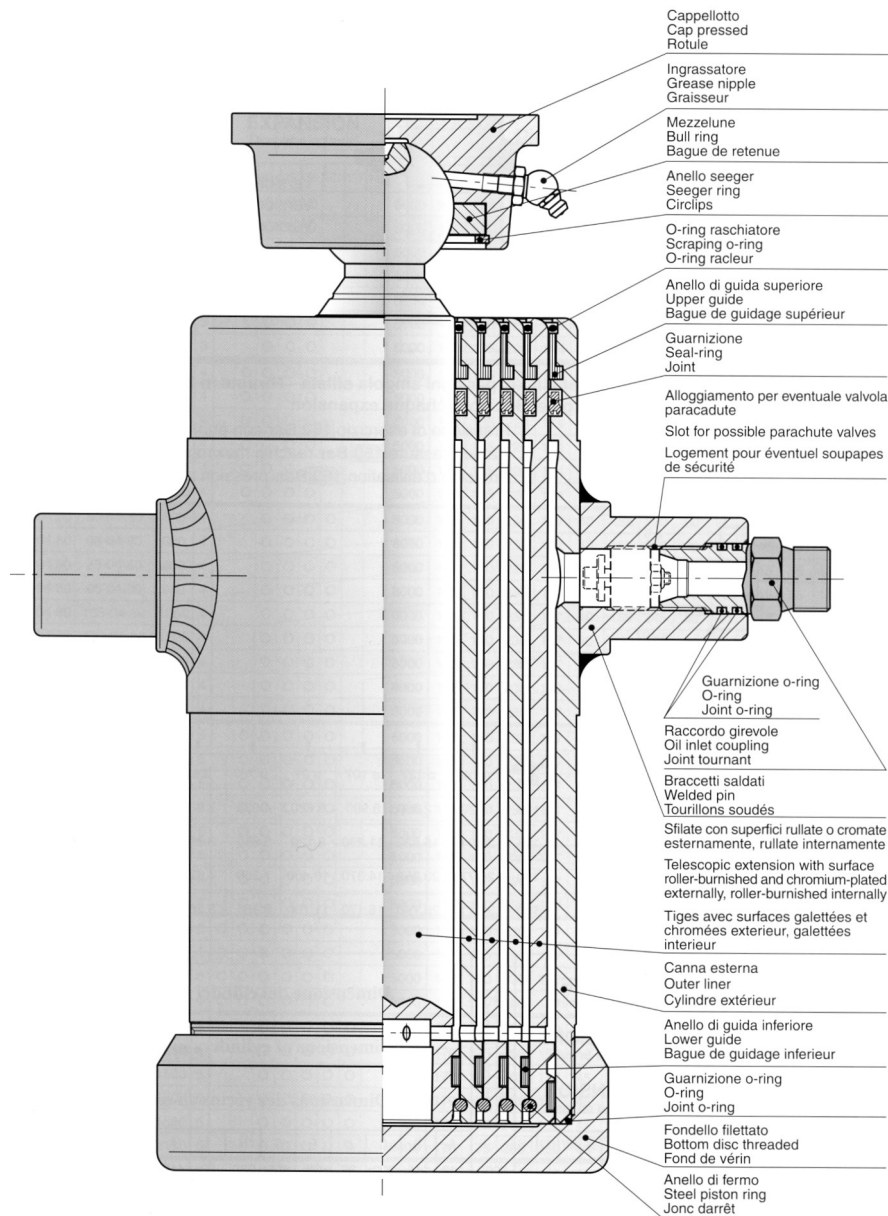
MECHANICAL FEATURES

All jacks in our range are made of hot-rolled seamless tubes, breaking load $R=N/mm^2$ 590, yield point $Rs=N/mm^2$ 460. The last sliding section is made of a C43 rolled section. The cap and base are made of hot-pressed ASTM A105m/97.

A $0,010\pm 0,015$ mm - thick hard-chromium film is applied on the outer surface of all sliding sections, centre-line average height $Ra=0,15\pm 0,20$.

The sliding sections are guided by delrin rings, for both inner and outer sliding.

Fluid tightness is obtained by means of wear and distortion-proof polyurethane seals, working temperatures between $-40 \div +110^\circ C$.

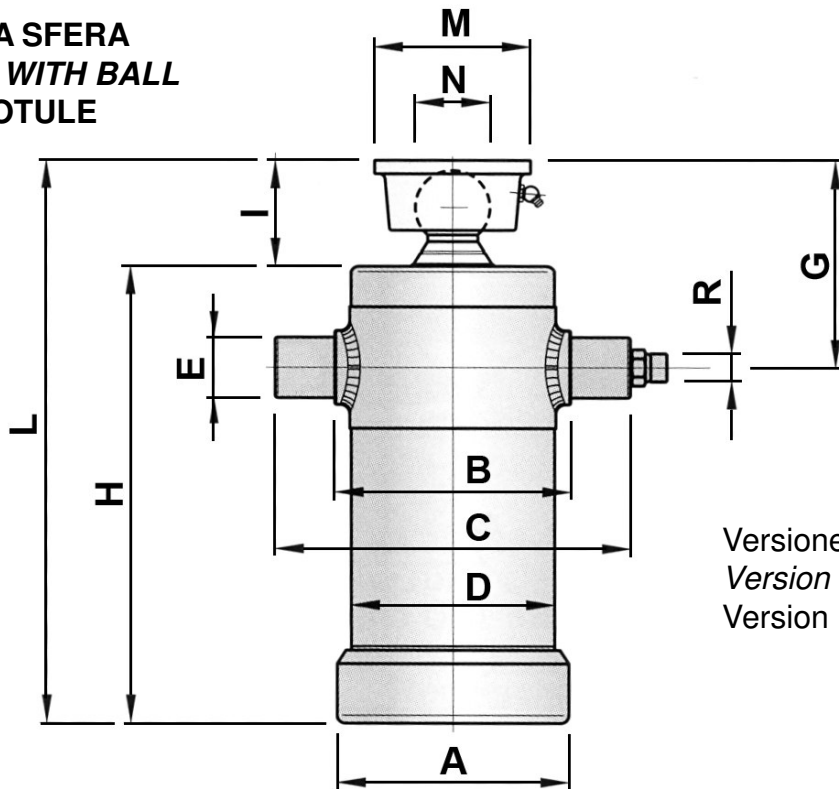


* Illustrazioni e descrizioni riportate nel presente catalogo sono a titolo indicativo e non impegnativo.

* Characteristics and dimensions are not binding.

* Nos renseignements sont donnés à titre purement indicatif, ils sont modifiables sans préavis.

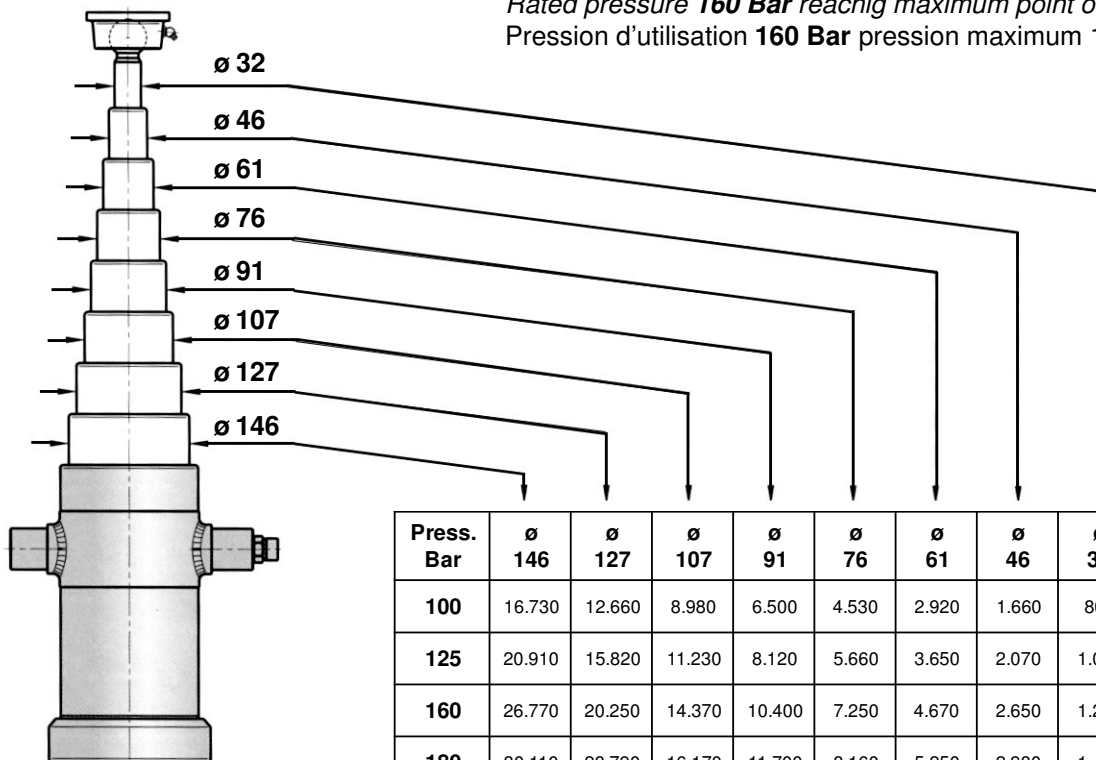
CILINDRO A SFERA
CYLINDER WITH BALL
VÉRIN A ROTULE



Versione disponibile a magazzino
 Version available in stock
 Version disponible en magasins


Portata in Kg, per ogni singola sfilata
Thrusts in Kg, for single extension
Charge en Kg, pour chaque expansion

Pressione di esercizio **160 Bar** con punte massime di 180 Bar
 Rated pressure **160 Bar** reachig maximum point of 180 Bar
 Pression d'utilisation **160 Bar** pression maximum 180 Bar



Press. Bar	ø 146	ø 127	ø 107	ø 91	ø 76	ø 61	ø 46	ø 32
100	16.730	12.660	8.980	6.500	4.530	2.920	1.660	800
125	20.910	15.820	11.230	8.120	5.660	3.650	2.070	1.000
160	26.770	20.250	14.370	10.400	7.250	4.670	2.650	1.280
180	30.110	28.790	16.170	11.700	8.160	5.250	2.980	1.440

CILINDRI A SFERA CROMATA - CYLINDERS BALL CHROME - VÉRIN A ROTULE CHROMÉE

	Cursa - Stroke - Course mm	N° Sfilate - N° Exten - N° Expar	SFILATE diametro in mm EXTENSIONS diameter in mm EXPANSION diamètre en mm								Portata - Capacity - Charge (100 bar in kg)	DIMENSIONE DEI CILINDRI mm DIMENSIONS OF CYLINDERS mm DIMENSIONS DES VÉRINS mm																Peso - Weight - Poids kg	Contenuto olio Lt - Capacity Lt - Capacité Lt.
			CODE	32	46	61	76	91	107	127		146	A	B	C	D	E	G	H	I	L	M	N	R					
20500350	500	3			*	*	*								5000	130	135	220	114	35	155	245	80	325	115	55	1/2	21	3
20600350	600	3			*	*	*								5000	130	135	220	114	35	155	280	80	360	115	55	1/2	23	3,6
20700350	700	3			*	*	*								5000	130	135	220	114	35	155	315	80	395	115	55	1/2	25	4
20800350	800	3			*	*	*								5000	130	135	220	114	35	155	345	80	425	115	55	1/2	27	4,6
20900350	900	3			*	*	*								5000	130	135	220	114	35	155	380	80	460	115	55	1/2	29	5,1
21050350	1050	3			*	*	*								5000	130	135	220	114	35	155	430	80	510	115	55	1/2	32	5,9
21150350	1150	3			*	*	*								5000	130	135	220	114	35	155	465	80	545	115	55	1/2	35	6,4
20480450	480	4		*	*	*	*								5000	130	135	220	114	35	145	200	70	270	100	45	1/2	17	2,6
20600450	600	4		*	*	*	*								5000	130	135	220	114	35	145	230	70	300	100	45	1/2	18	3,1
20680450	680	4		*	*	*	*								5000	130	135	220	114	35	145	250	70	320	100	45	1/2	19	3,5
20850450	850	4		*	*	*	*								5000	130	135	220	114	35	145	290	70	360	100	45	1/2	22	4,2
21050450	1050	4		*	*	*	*								5000	130	135	220	114	35	145	340	70	410	100	45	1/2	25	5,1
21150450	1150	4		*	*	*	*								5000	130	135	220	114	35	145	365	70	435	100	45	1/2	27	5,5
20600480	600	4			*	*	*	*							8000	145	150	230	127	40	155	230	80	310	115	55	1/2	24	4,5
20680480	680	4			*	*	*	*							8000	145	150	230	127	40	155	250	80	330	115	55	1/2	25	5
20850480	850	4			*	*	*	*							8000	145	150	230	127	40	155	295	80	375	115	55	1/2	28	6,1
20950480	950	4			*	*	*	*							8000	145	150	230	127	40	155	320	80	400	115	55	1/2	30	6,8
21050480	1050	4			*	*	*	*							8000	145	150	230	127	40	155	345	80	425	115	55	1/2	32	7,4
21200480	1200	4			*	*	*	*							8000	145	150	230	127	40	155	380	80	460	115	55	1/2	35	8,4
21300480	1300	4			*	*	*	*							8000	145	150	230	127	40	155	405	80	485	115	55	1/2	36	9
21500480	1500	4			*	*	*	*							8000	145	150	230	127	40	155	455	80	535	115	55	1/2	40	10,3
21700480	1700	4			*	*	*	*							8000	145	150	230	127	40	155	505	80	585	115	55	1/2	44	11,6
20500550	500	5		*	*	*	*	*							5000	145	150	230	127	40	145	180	70	250	100	45	1/2	19	3,5
20700550	700	5		*	*	*	*	*							5000	145	150	230	127	40	145	220	70	290	100	45	1/2	21	4,6
20850550	850	5		*	*	*	*	*							5000	145	150	230	127	40	145	250	70	320	100	45	1/2	23	5,4
21050551	1050	5		*	*	*	*	*							5000	145	150	230	127	40	145	290	70	360	100	45	1/2	26	6,5
21150551	1150	5		*	*	*	*	*							5000	145	150	230	127	40	145	311	70	381	100	45	1/2	28	7
21150552	1250	5		*	*	*	*	*							5000	145	150	230	127	40	145	331	70	401	100	45	1/2	29	7,6
21500553	1500	5		*	*	*	*	*							5000	145	150	230	127	40	145	381	70	451	100	45	1/2	33	9
21850550	1850	5		*	*	*	*	*							5000	145	150	230	127	40	145	451	70	521	100	45	1/2	38	11
20600650	600	6	*	*	*	*	*	*							5000	145	150	230	127	40	145	185	65	250	100	45	1/2	18	3,6
20850650	850	6	*	*	*	*	*	*							5000	145	150	230	127	40	145	225	65	290	100	45	1/2	21	4,9
21150650	1150	6	*	*	*	*	*	*							5000	145	150	230	127	40	145	275	65	340	100	45	1/2	25	6,3
21250650	1250	6	*	*	*	*	*	*							5000	145	150	230	127	40	145	290	65	355	100	45	1/2	26	6,8
21000590	1000	5			*	*	*	*	*						9000	170	175	265	152	45	155	295	80	375	115	55	1/2	39	9,2
21250590	1250	5			*	*	*	*	*						9000	170	175	265	152	45	155	345	80	425	115	55	1/2	45	11,2
21500590	1500	5			*	*	*	*	*						9000	170	175	265	152	45	155	395	80	475	115	55	1/2	50	13,1
21700590	1700	5			*	*	*	*	*						9000	170	175	265	152	45	155	435	80	515	115	55	1/2	54	14,7
21850590	1850	5			*	*	*	*	*						9000	170	175	265	152	45	155	465	80	545	115	55	1/2	58	15,9
21150590	2150	5			*	*	*	*	*						9000	170	175	265	152	45	155	525	80	605	115	55	1/2	61	18,3
21500610	1500	6			*	*	*	*	*	*					10000	195	200	290	168	50	200	350	80	430	115	55	3/4	56	16,4
21700610	1700	6			*	*	*	*	*	*					10000	195	200	290	168	50	200	385	80	465	115	55	3/4	62	18,5
21900610	1900	6			*	*	*	*	*	*					10000	195	200	290	168	50	200	420	80	500	115	55	3/4	65	20,2
22300610	2300	6			*	*	*	*	*	*					10000	195	200	290	168	50	200	485	80	565	115	55	3/4	74	24,1
22600610	2600	6			*	*	*	*	*	*					10000	195	200	290	168	50	200	535	80	615	115	55	3/4	80	26,9
21000512	1000	5			*	*	*	*	*	*					12000	195	200	290	168	50	200	300	80	380	115	55	3/4	44	12,6
21250512	1250	5			*	*	*	*	*	*					12000	195	200	290	168	50	200	350	80	430	115	55	3/4	54	15,4
21500512	1500	5			*	*	*	*	*	*					12000	195	200	290	168	50	200	400	80	480	115	55	3/4	56	18,1
21850512	1850	5			*	*	*	*	*	*					12000	195	200	290	168	50	200	470	80	550	115	55	3/4	63	21,8
22150512	2150	5			*	*	*	*	*	*					12000	195	200	290	168	50	200	530	80	610	115	55	3/4	70	25,1

CILINDRI A SFERA - CYLINDERS BALL - VÉRIN A ROTULE


	Corso - Stroke - Course mm	N° Sfilate - N° Exten - N° Expar	SFILATE diametro in mm EXTENSIONS diameter in mm EXPANSION diamètre en mm						Portata - Capacity - Charge (100 bar in kg)	DIMENSIONE DEI CILINDRI mm DIMENSIONS OF CYLINDERS mm DIMENSIONS DES VÉRINS mm											Peso - Weight - Poids kg	Contenuto olio Lt - Capacity Lt - Capacité
			46	61	76	91	107	127		A	B	C	D	E	G	H	I	L	M	N		
20495230	495	2		*	*				3000	110	115	195	95	35	150	332	80	412	95	55	20	2
20595230	595	2		*	*				3000	110	115	195	95	35	150	380	80	460	95	55	22	2,3
20695230	695	2		*	*				3000	110	115	195	95	35	150	430	80	510	95	55	22	2,7
20500330	500	3		*	*				3000	110	115	195	95	35	142	252	70	322	112	45	15,5	1,6
20593330	593	3		*	*				3000	110	115	195	95	35	142	282	70	352	112	45	16,5	2
20683330	683	3		*	*				3000	110	115	195	95	35	142	312	70	382	110	45	18	2,2
20790330	790	3		*	*				3000	110	115	195	95	35	142	347	70	417	110	45	19,5	2,5
20893330	893	3		*	*				3000	110	115	195	95	35	142	382	70	452	110	45	21	2,8
20500350	500	3		*	*	*			5000	128	135	215	112	35	147	257	80	337	95	55	22	2,5
20593350	593	3		*	*	*			5000	128	135	215	112	35	147	287	80	367	95	55	24	2,8
20683350	683	3		*	*	*			5000	128	135	215	112	35	147	317	80	397	95	55	26	3,3
20785350	785	3		*	*	*			5000	128	135	215	112	35	152	352	80	432	95	55	29	3,8
20893350	893	3		*	*	*			5000	128	135	215	112	35	152	387	80	467	95	55	31	4,2
21043350	1043	3		*	*	*			5000	128	135	215	112	35	152	437	80	517	95	55	33	5
21283350	1283	3		*	*	*			5000	128	135	215	112	35	155	517	80	597	95	55	40	6
20500450	500	4	*	*	*	*			5000	128	135	215	112	35	130	190	70	260	112	45	18	2
20590450	590	4	*	*	*	*			5000	128	135	215	112	35	140	240	70	310	112	45	20,5	2,4
20640450	640	4	*	*	*	*			5000	128	135	215	112	35	140	260	70	330	112	45	21	2,7
20790450	790	4	*	*	*	*			5000	128	135	215	112	35	140	290	70	354	112	45	22	3,2
21060450	1060	4	*	*	*	*			5000	130	135	215	112	35	145	355	70	425	112	45	27	4,3
20690550	690	5	*	*	*	*	*		5000	144	150	230	124	40	150	235	70	305	112	45	23,5	3,5
20840550	840	5	*	*	*	*	*		5000	144	150	230	124	40	150	265	70	335	112	45	25	4,5
21040550	1040	5	*	*	*	*	*		5000	144	150	230	124	40	150	305	70	375	112	45	29	5
21190550	1190	5	*	*	*	*	*		5000	144	150	230	124	40	150	335	70	405	112	45	31	6
21490550	1490	5	*	*	*	*	*		5000	144	150	230	124	40	150	395	70	465	112	45	35	7,5
22140550	2140	5	*	*	*	*	*		5000	144	150	230	124	40	150	525	70	595	110	45	45	10,8
20830470	830	4		*	*	*	*		7000	144	150	230	124	40	157	302	80	382	95	55	30	5
20950470	950	4		*	*	*	*		7000	144	150	230	124	40	157	325	80	412	95	55	31,5	5,6
21050470	1050	4		*	*	*	*		7000	144	150	230	124	40	157	357	80	437	95	55	33,5	6,2
21190470	1190	4		*	*	*	*		7000	144	150	230	124	40	157	392	80	472	95	55	36	7
21290470	1290	4		*	*	*	*		7000	144	150	230	124	40	157	417	80	497	95	55	39	7,5
21510470	1510	4		*	*	*	*		7000	144	150	230	124	40	157	460	80	552	95	55	43	8,8
20980590	980	5		*	*	*	*	*	9000	172	175	265	152	45	165	300	80	380	95	55	40,5	7,5
21230590	1230	5		*	*	*	*	*	9000	172	175	265	152	45	165	350	80	430	95	55	56	9
21480590	1480	5		*	*	*	*	*	9000	172	175	265	152	45	165	400	80	480	95	55	53	11
21880590	1880	5		*	*	*	*	*	9000	172	175	265	152	45	165	480	80	560	95	55	61,5	13,5
22130590	2130	5		*	*	*	*	*	9000	172	175	265	152	45	165	530	80	610	95	55	67	15,5
22480590	2480	5		*	*	*	*	*	9000	172	175	265	152	45	165	600	80	680	95	55	75	18
21005650	1005	6	*	*	*	*	*	*	5000	172	175	265	152	45	155	260	80	340	112	45	36	6,5
21180650	1180	6	*	*	*	*	*	*	5000	172	175	265	152	45	155	290	80	370	112	45	39,5	7,1
21480650	1480	6	*	*	*	*	*	*	5000	172	175	265	152	45	155	340	80	420	112	45	45,5	8,9
21780650	1780	6	*	*	*	*	*	*	5000	172	175	265	152	45	155	390	80	470	112	45	51	11,2
22557650	2557	6	*	*	*	*	*	*	5000	172	175	265	152	45	155	520	80	600	110	45	61,5	16

TABELLA INCLINAZIONE CASSONE IN BASE ALLA DISTANZA PERNI E CORSA DEL CILINDRO
BODY TILTING TABLE ON THE DISTANCE OF THE PINS AND THE CYLINDER STROKES
TABLE INCLINAISON BENNE, D'APRÈS L'ENTRAXE DES PIVOTS ET COURSE DU VÉRIN

RM DP	DP																							
	360	480	500	600	680	700	800	850	900	950	1000	1050	1150	1200	1250	1300	1500	1700	1850	1900	2150	2300	2600	
500	42°	57°	60°	*	*	*	*	*	*	*	*	*	*	*	*	*	*	*	*	*	*	*	*	*
600	35°	47°	49°	60°	*	*	*	*	*	*	*	*	*	*	*	*	*	*	*	*	*	*	*	*
700	*	*	42°	51°	58°	*	*	*	*	*	*	*	*	*	*	*	*	*	*	*	*	*	*	*
800	*	*	*	44°	50°	52°	60°	*	*	*	*	*	*	*	*	*	*	*	*	*	*	*	*	*
900	*	*	*	*	44°	45°	53°	60°	*	*	*	*	*	*	*	*	*	*	*	*	*	*	*	*
1000	*	*	*	*	40°	41°	47°	50°	53°	57°	60°	*	*	*	*	*	*	*	*	*	*	*	*	*
1100	*	*	*	*	*	*	43°	45°	48°	51°	54°	57°	*	*	*	*	*	*	*	*	*	*	*	*
1200	*	*	*	*	*	*	*	41°	44°	74°	49°	52°	57°	*	*	*	*	*	*	*	*	*	*	*
1300	*	*	*	*	*	*	*	*	40°	43°	45°	48°	52°	55°	58°	*	*	*	*	*	*	*	*	*
1400	*	*	*	*	*	*	*	*	*	40°	42°	44°	48°	51°	53°	55°	*	*	*	*	*	*	*	*
1500	*	*	*	*	*	*	*	*	*	*	*	41°	45°	47°	49°	51°	60°	*	*	*	*	*	*	*
1600	*	*	*	*	*	*	*	*	*	*	*	*	42°	44°	46°	48°	56°	*	*	*	*	*	*	*
1700	*	*	*	*	*	*	*	*	*	*	*	*	*	41°	43°	45°	52°	60°	*	*	*	*	*	*
1800	*	*	*	*	*	*	*	*	*	*	*	*	*	41°	42°	49°	56°	62°	*	*	*	*	*	*
1900	*	*	*	*	*	*	*	*	*	*	*	*	*	*	40°	46°	53°	58°	60°	*	*	*	*	*
2000	*	*	*	*	*	*	*	*	*	*	*	*	*	*	*	44°	50°	55°	57°	*	*	*	*	*
2100	*	*	*	*	*	*	*	*	*	*	*	*	*	*	*	*	42°	48°	52°	54°	62°	*	*	*
2200	*	*	*	*	*	*	*	*	*	*	*	*	*	*	*	*	40°	45°	50°	51°	58°	*	*	*
2300	*	*	*	*	*	*	*	*	*	*	*	*	*	*	*	*	*	43°	47°	49°	56°	60°	*	*
2400	*	*	*	*	*	*	*	*	*	*	*	*	*	*	*	*	*	41°	45°	47°	53°	57°	*	*
2500	*	*	*	*	*	*	*	*	*	*	*	*	*	*	*	*	*	40°	44°	45°	51°	55°	*	*
2600	*	*	*	*	*	*	*	*	*	*	*	*	*	*	*	*	*	*	42°	43°	49°	53°	60°	*
2700	*	*	*	*	*	*	*	*	*	*	*	*	*	*	*	*	*	*	40°	41°	47°	50°	58°	*
2800	*	*	*	*	*	*	*	*	*	*	*	*	*	*	*	*	*	*	*	40°	45°	48°	55°	*
2900	*	*	*	*	*	*	*	*	*	*	*	*	*	*	*	*	*	*	*	*	44°	47°	53°	*
3000	*	*	*	*	*	*	*	*	*	*	*	*	*	*	*	*	*	*	*	*	42°	45°	51°	*
3100	*	*	*	*	*	*	*	*	*	*	*	*	*	*	*	*	*	*	*	*	*	*	49°	*
3200	*	*	*	*	*	*	*	*	*	*	*	*	*	*	*	*	*	*	*	*	*	*	48°	*
3300	*	*	*	*	*	*	*	*	*	*	*	*	*	*	*	*	*	*	*	*	*	*	46°	*

Corsa utile cilindro (mm).
RM= Stroke cylinder (mm).
 Course du vérin (mm).

Distanza perni (mm).
DP= Pivot distance (mm).
 Distance entre les pivots (mm).

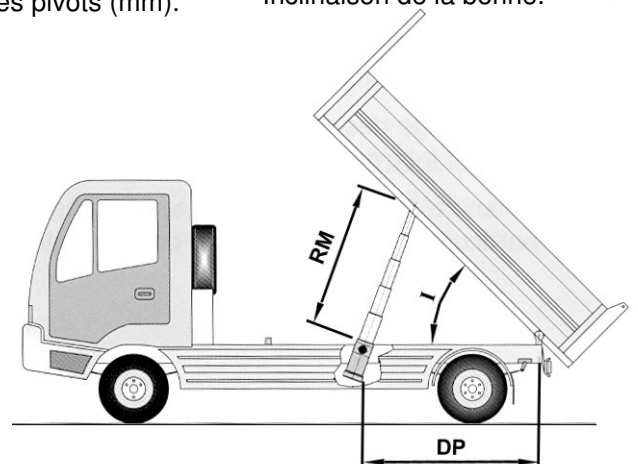
Inclinazione cassone.
I= Body tilting.
 Inclinaison de la benne.

N.B.

Evitare nel modo più assoluto di far arrivare a fine corsa il cilindro e di far poggiare sullo stesso il cassone quando è in posizione di lavoro.

Absolutely avoid the cylinder reaching the end of its stroke and touching the body when in rest position.

Ne pas venir en butée de fin de course; ne pas faire appuyer le caisson en position de repos sur le vérin.



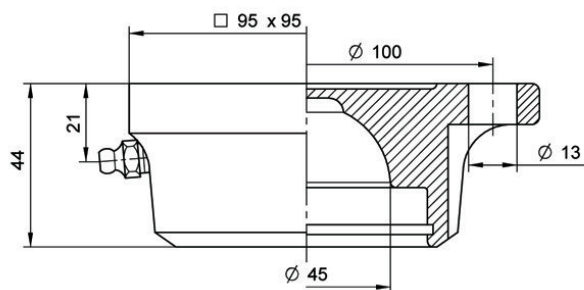
CHIOCCIOLA QUADRATA (SEDE SFERICA)
SQUARE JOINT (SPHERIC SEAT)

JONCTION CARRÉE (SPHÉRIQUE AUSSI)
VIERKANTIGE VERBINDUNG (KUGELFORMIGEM SITZ)

Art. 24140000

TIPO / TYPE / TYPE / TPY

Ø 45



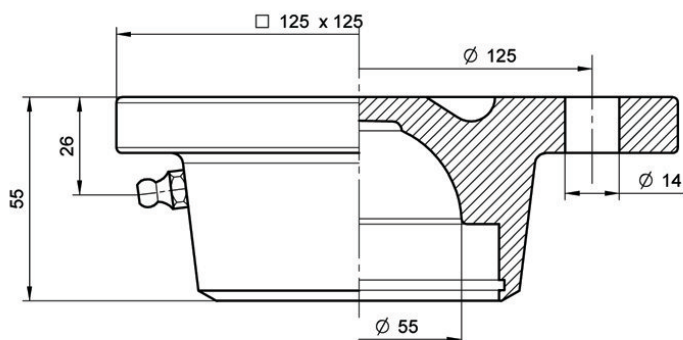
PORTATA MAX 11 Ton.
CHARGE MAX 11 Ton.
MAX CAPACITY 11 Ton.
MAX BALASTBARKEIT 11 Ton.

PESO - WEIGHT - POIDS - GEWICHT Kg. 1,8

Art. 29570000

TIPO / TYPE / TYPE / TPY

Ø 55



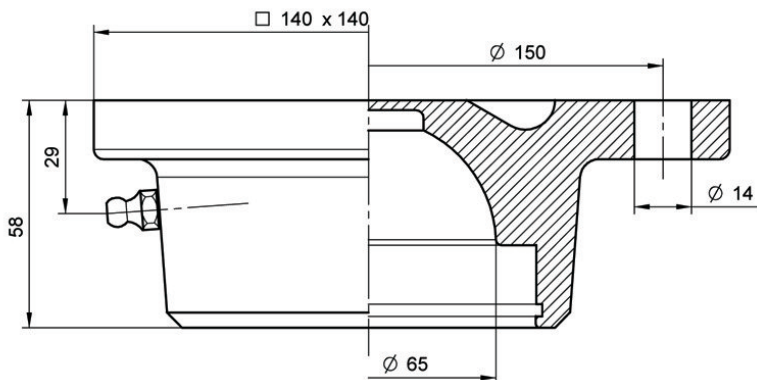
PORTATA MAX 15 Ton.
CHARGE MAX 15 Ton.
MAX CAPACITY 15 Ton.
MAX BALASTBARKEIT 15 Ton.

PESO - WEIGHT - POIDS - GEWICHT Kg. 2

Art. 27820000

TIPO / TYPE / TYPE / TPY

Ø 65



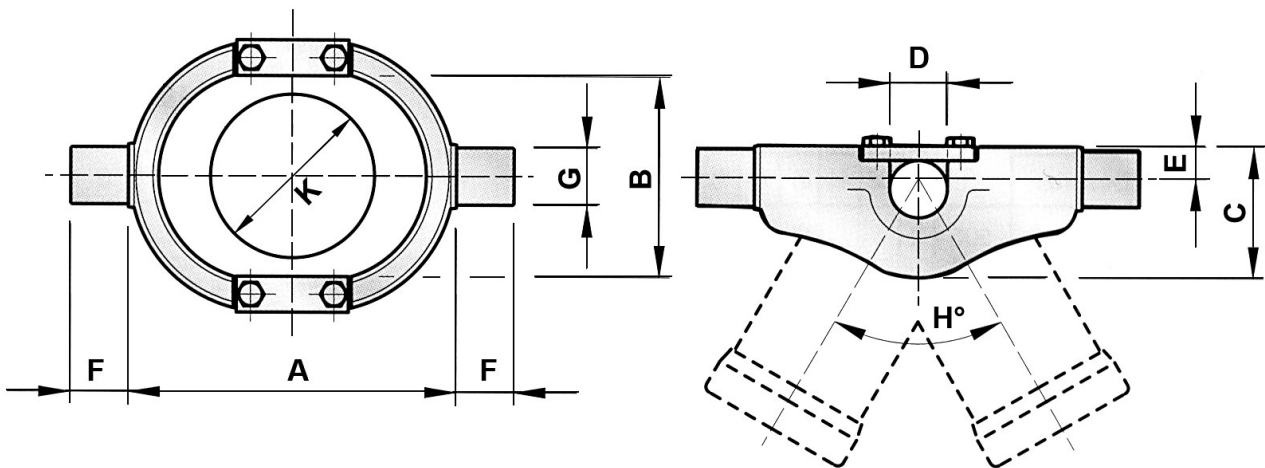
PORTATA MAX 23 Ton.
CHARGE MAX 23 Ton.
MAX CAPACITY 23 Ton.
MAX BALASTBARKEIT 23 Ton.

PESO - WEIGHT - POIDS - GEWICHT Kg. 3

Culle per ancoraggio martinetti
Cradles for cylinders
 Suspension à la cardan
Kardanring für zylinder



Articolo Article	Dimensione Dimensions									kg	Trattamento Treatment
	A	B	C	ØD	E	F	ØG	H	ØK		
20010001	200	120	77	35	25	35	35	65°	95	5	Grezzo Raw
20010002	230	135	97	35	28	40	40	75°	112	9	Verniciato Painted
20010003/V	230	155	107	40	31	40	40	60°	124	10,5	Verniciato Painted
20010004	280	185	125	45	40	45	50	60°	150	15	Grezzo Raw

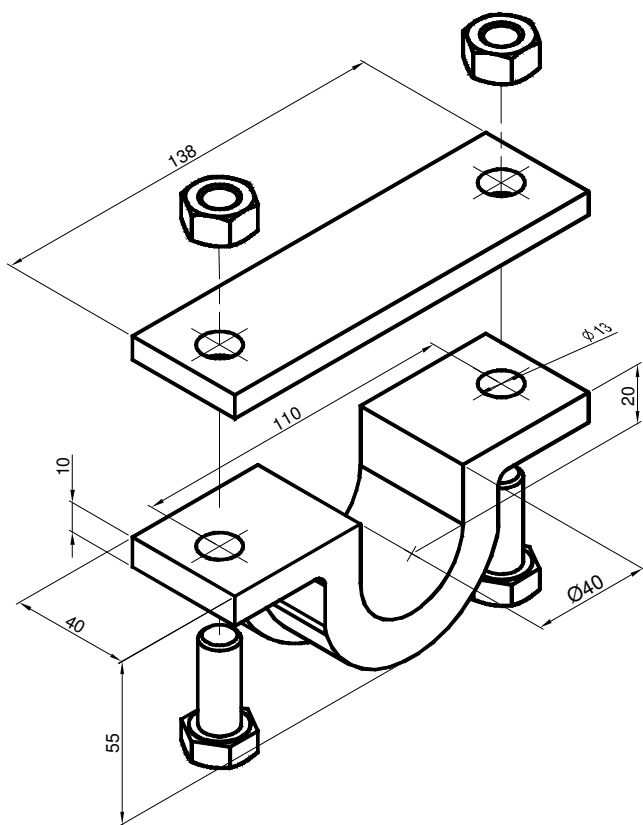


Culle tipo leggero per ancoraggio martinetti
Light type cradles for cylinders
 Suspension à la cardan
Kardanring für zylinder

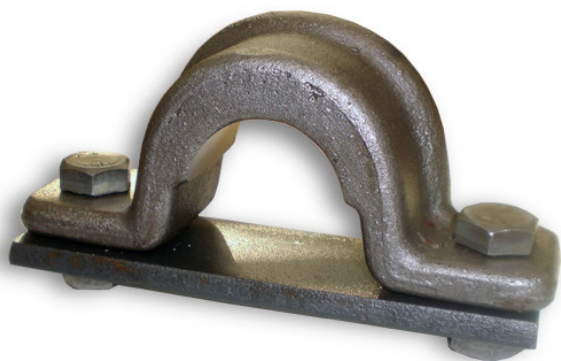
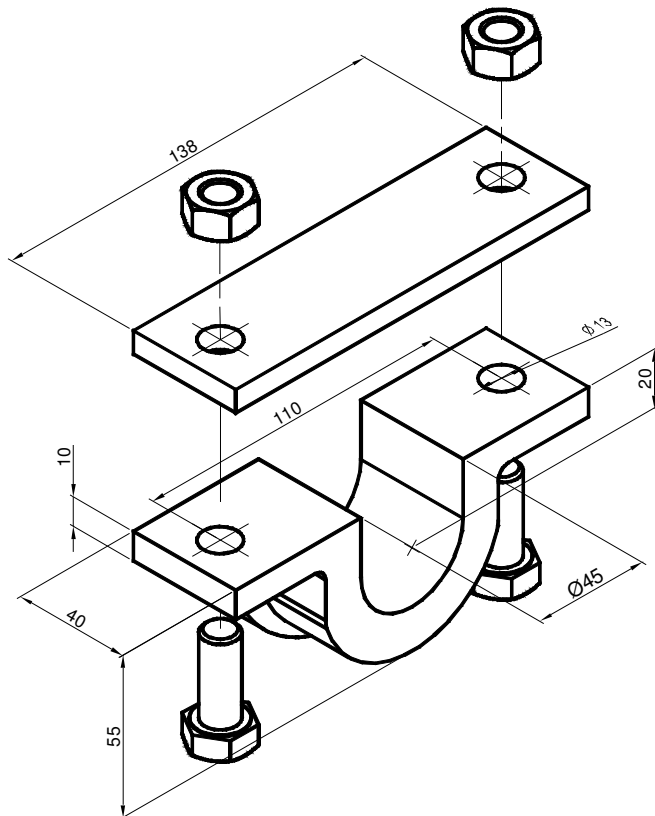


Articolo Article	Dimensione Dimensions							kg	Trattamento Treatment
	A	B	C	ØD	E	F	ØG		
21010001	200	125	76	36	25	37,5	35	4,8	Zincato Galvanized
21010003	240	151	104	41	21	40	40	9,6	Zincato Galvanized
21010004	280	168	114	49,5	29,5	40	45	11,5	Zincato Galvanized

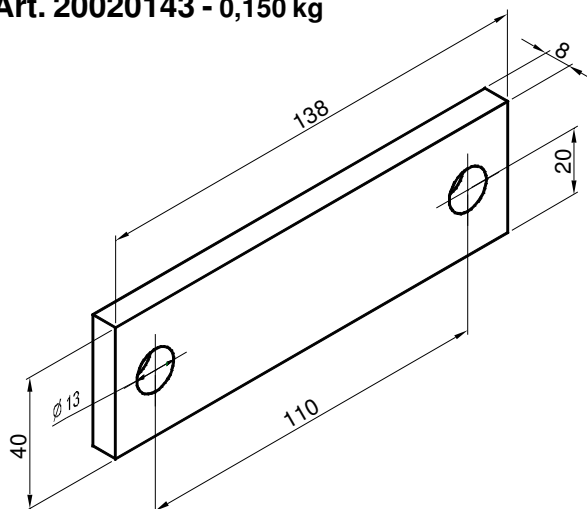
Supporti Ø40 per cilindri, forniti di relativa bulloneria
Brackets Ø40 for cylinders, with appropriate bolts and nuts
 Paliers Ø40 pour verins, et munies de boulonnerie
Halterunge Ø40 für zylinder, mit entsprechenden Schrauben
Art. 20020140/1 - 1,200 kg



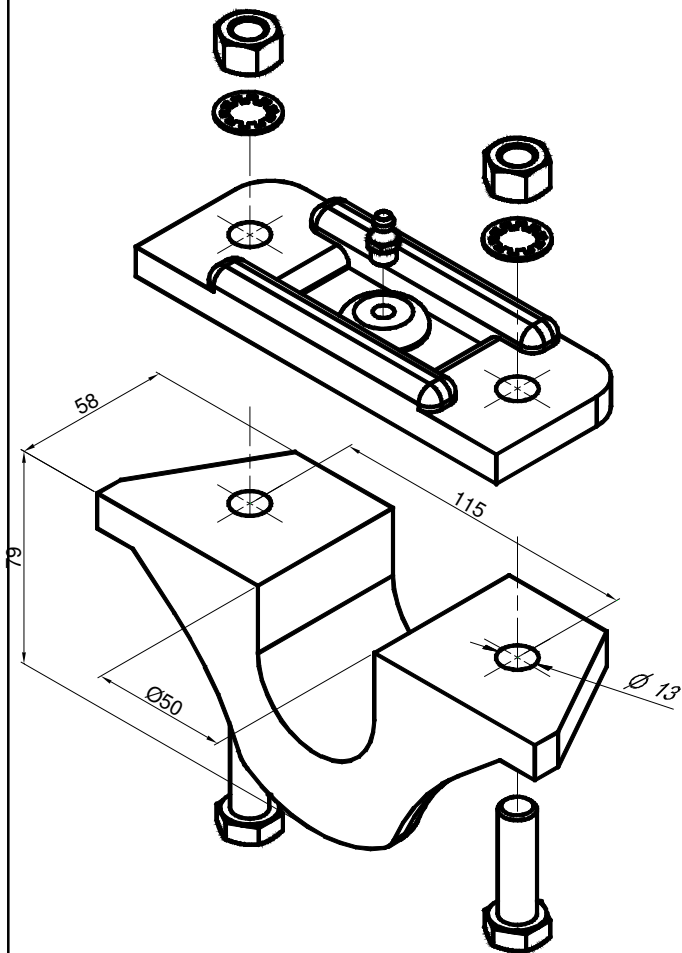
Supporti Ø45 per cilindri, forniti di relativa bulloneria
Brackets Ø45 for cylinders, with appropriate bolts and nuts
 Paliers Ø45 pour verins, et munies de boulonnerie
Halterunge Ø45 für zylinder, mit entsprechenden Schrauben
Art. 20020145/1 - 1,00 kg



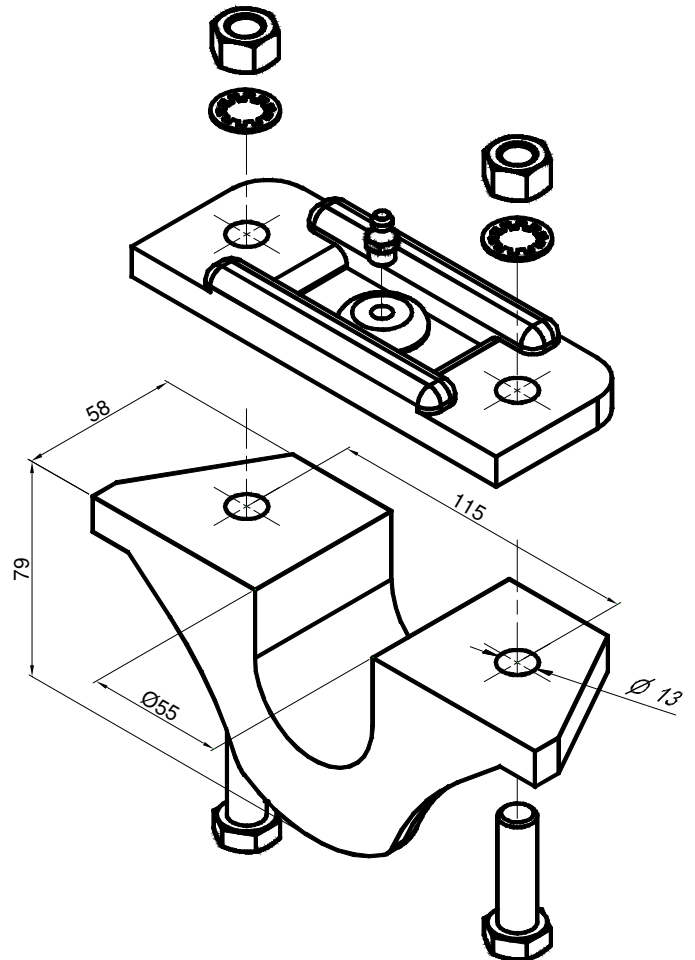
Piastra
 Sheet
 Plaquette
 Platte
Art. 20020143 - 0,150 kg



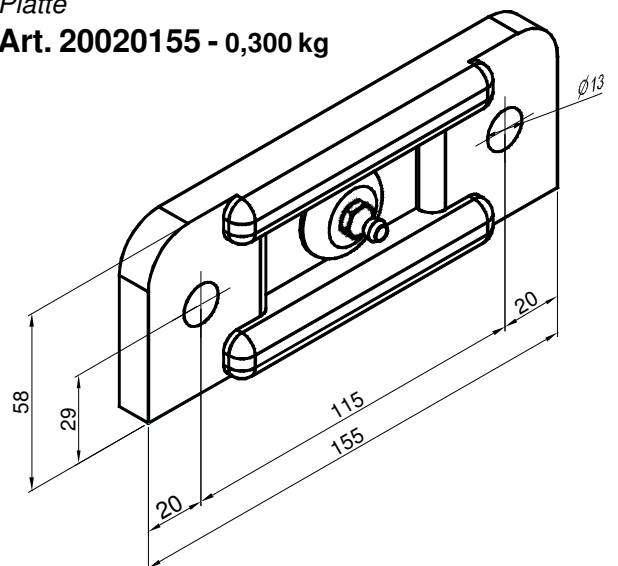
Supporti Ø50 per cilindri, forniti di relativa bulloneria
Brackets Ø50 for cylinders, with appropriate bolts and nuts
 Paliers Ø50 pour verins, et munies de boulonnerie
Halterunge Ø50 für zylinder, mit entsprechenden schrauben
Art. 20020150/1 - 2,400 kg



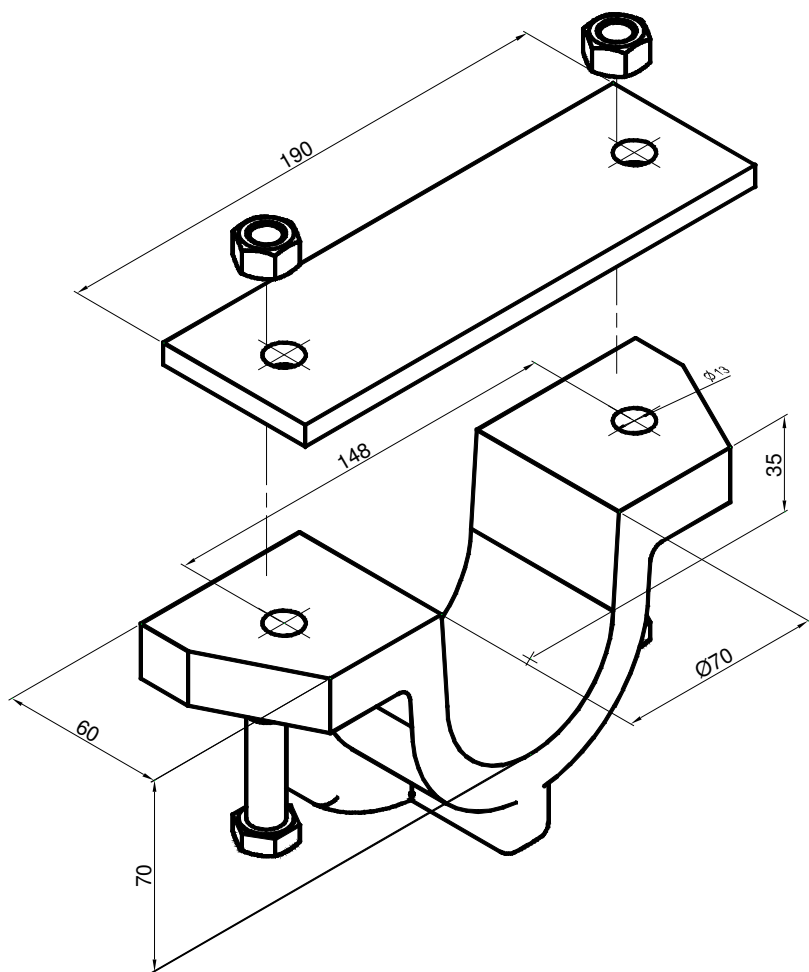
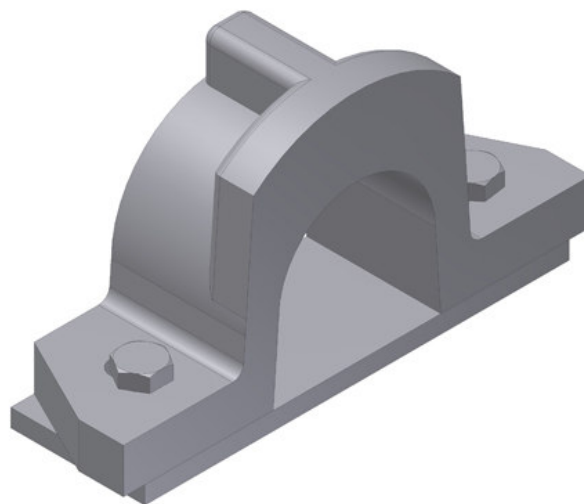
Supporti Ø55 per cilindri, forniti di relativa bulloneria
Brackets Ø55 for cylinders, with appropriate bolts and nuts
 Paliers Ø55 pour verins, et munies de boulonnerie
Halterunge Ø55 für zylinder, mit entsprechenden Schrauben
Art. 20020151/1 - 2,300 kg



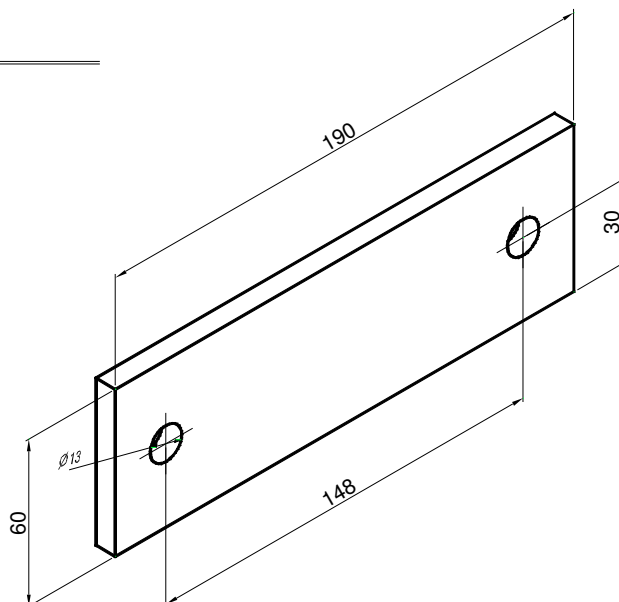
Piastra con ingrassatore
Sheet with grease
 Plaquette
 Platte
Art. 20020155 - 0,300 kg



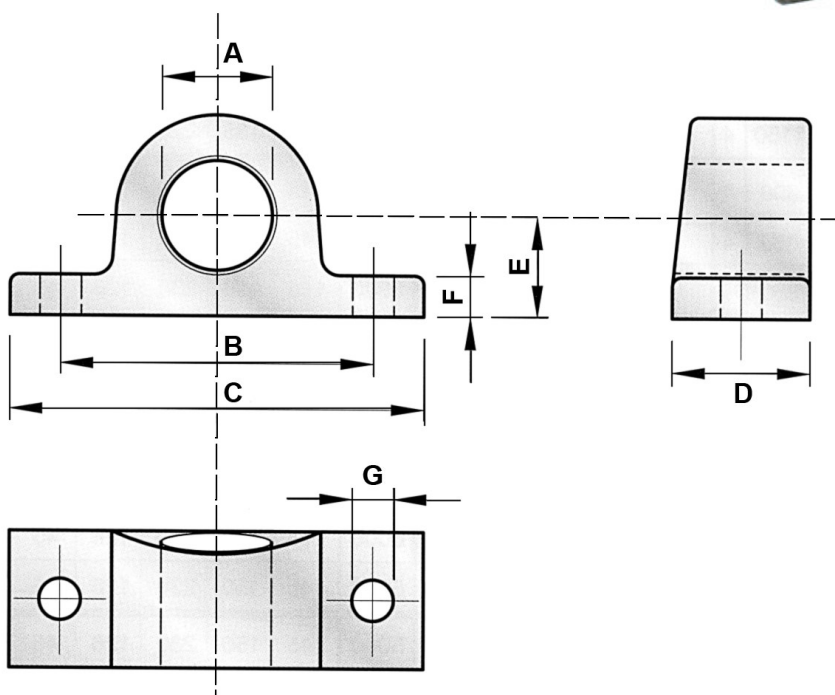
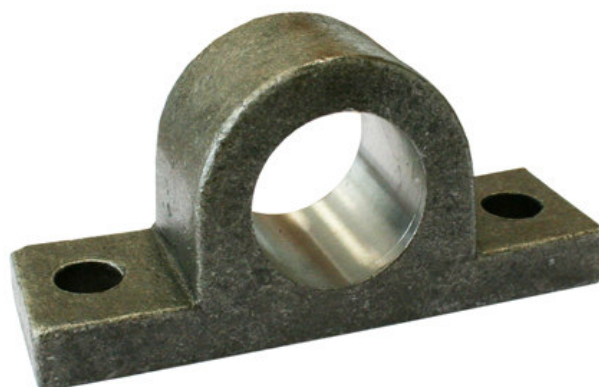
Supporti Ø70 per cilindri, forniti di relativa bulloneria
Brackets Ø70 for cylinders, with appropriate bolts and nuts
Paliers Ø70 pour verins, et munies de boulonnerie
Halterunge Ø70 für zylinder, mit entsprechenden schrauben
Art. 20020270/1 - 3,400 kg



Piastra
Sheet
Plaque
Platte
Art. 20020273 - 0,700 kg

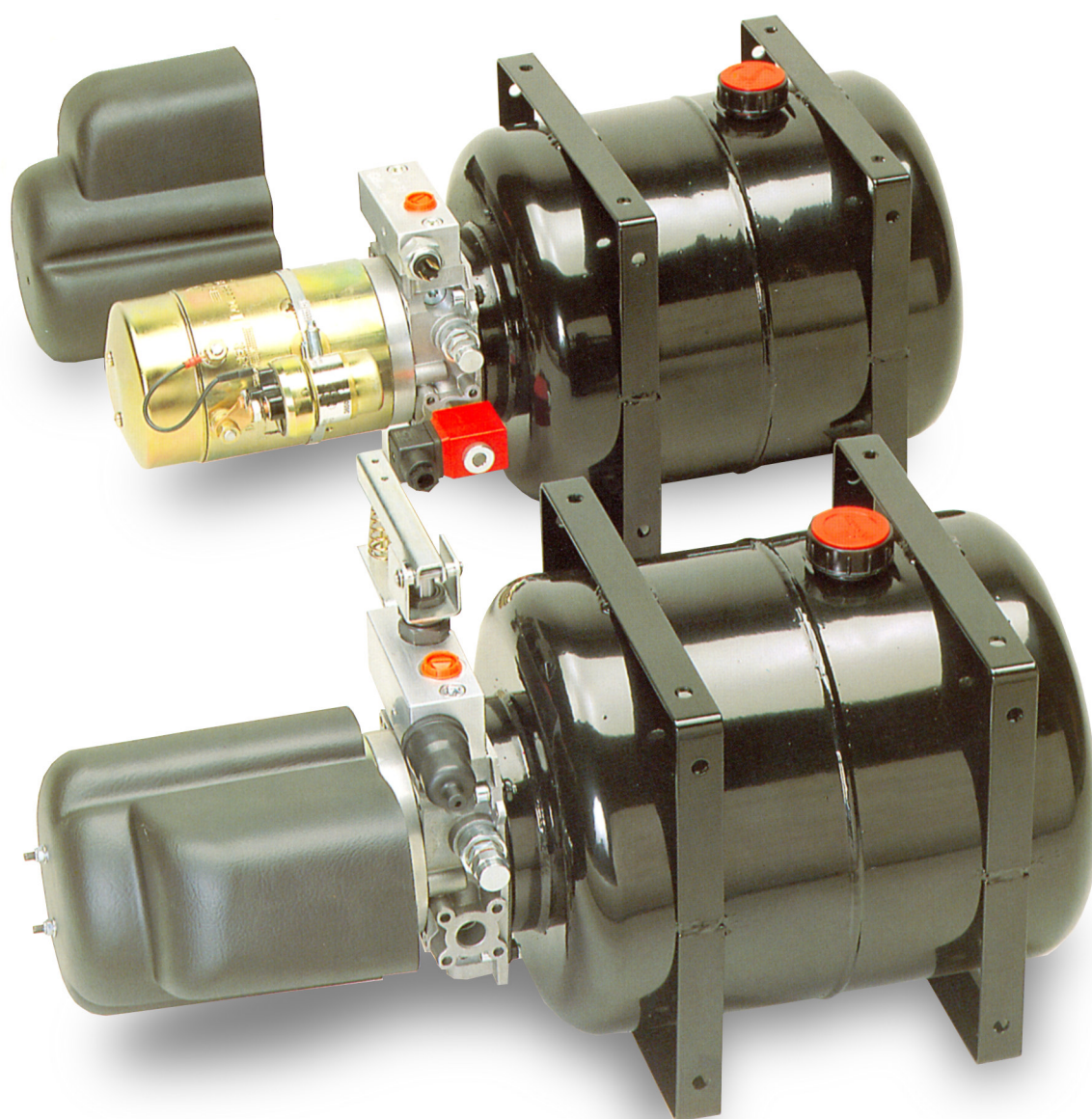


Supporti per cilindri
Brackets for cylinders
 Paliers pour verins
Halterung für zylinder



Articolo Article	Dimensioni Dimensions							kg
	ØA	B	C	D	E	F	ØG	
20020035	35,5	95	130	45	30	12	13	1
20020040	40,5	105	140	45	33	15	15	1,2
20020045	45,5	105	140	45	33	15	15	1,2
20020050	50,5	120	155	50	37	17	15	1,5

CENTRALINA C.C PER RIBALTABILI
D.C POWER PACK FOR DUMPERS
HYDRAULISCHE AUSZÜSTUNGEN

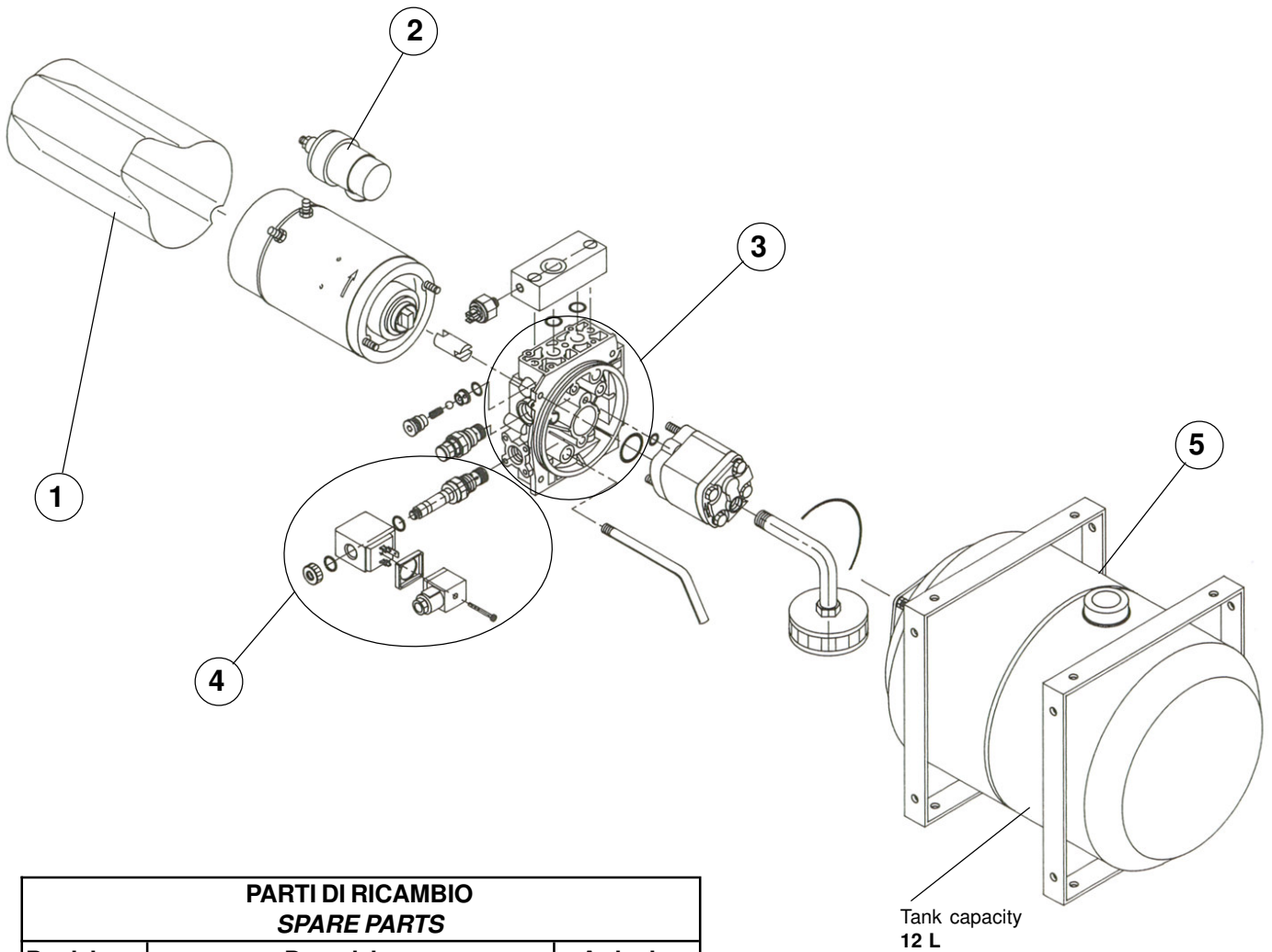


Centralina completa da 12 Volt
Art.14600012

Centralina completa da 24 Volt
Art. 14600024

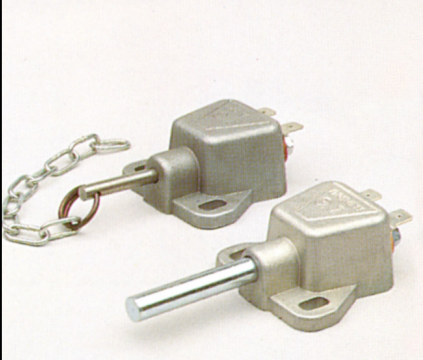
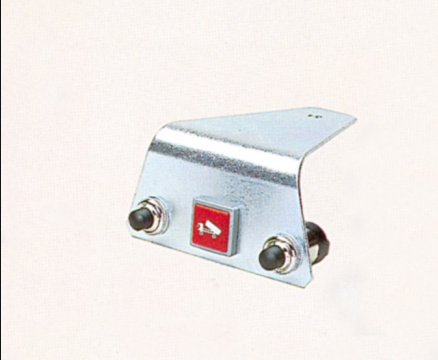

12 Volt Kit Power pack
Art.14600012

24 Volt Kit Power pack
Art. 14600024

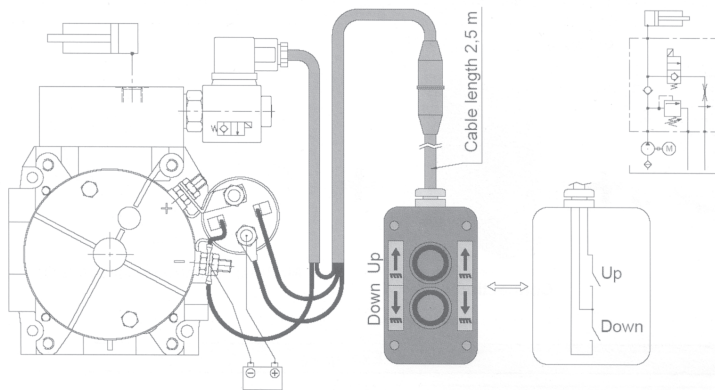


PARTI DI RICAMBIO SPARE PARTS		
Posizione Position	Descrizione Description	Articolo Article
1	Carter motore Motor carter	14600003
2	Motorino d'accensione Starting relay	14600009
3	Collettore centrale Central manifold	14600010
4	Solenoid compreso di connettore e valvola Solenoid valve complete	14600008
5	Tanica capacità 12 Litri Tank capacity 12 Liters	14600007

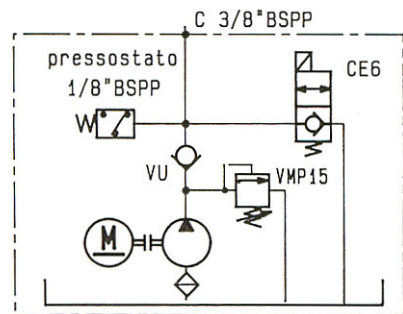
ACCESSORI / ACCESSOIRES

		
Fine corsa a spingere <i>Stop cylinder stroke push-type</i> Art. 14600004	Pulsantiera elettrica con spia <i>Electric panel control</i> Art. 14600001	Tubo idraulico 1/2" L=1000 - Attacco 1/2" - 3/8" <i>Hydraulic pipe 1/2"</i> L=1000 - Ring 1/2" - 3/8" Art. 14121000
Fine corsa in tiro <i>Stop cylinder stroke pull-type</i> Art. 14600002		

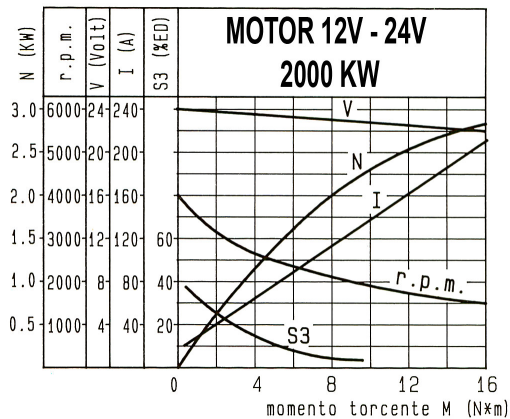
Controllo a distanza
Remote control
Art. 14600006



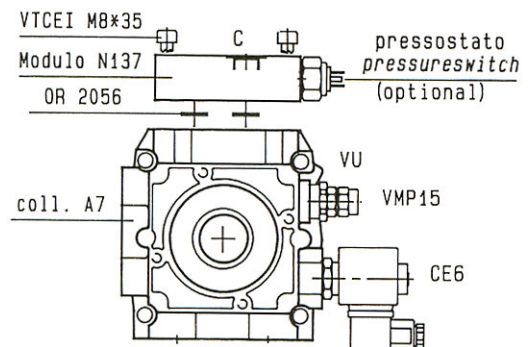
Schema idraulico
Hydraulic circuit








CURVA CARATTERISTICA MOTORI MOTORS DIAGRAMS
















COLLETTORE CENTRALE MANIFLOND CENTRAL










EQUIPAGGIAMENTI / EQUIPMENTS

Art.14600012 12 Volt kit power pack Tank capacity 12 lt.	Art.14600001 Electric panel control	Art.14600002 Stop cylinder stroke pull-type	Art.21050551 Cylinder Course 1050 Exten 5 Capacity 5000 kg	Art.14121000 Hydraulic pipe 1/2"
				
Art. 14000001				

Art.14600012 12 Volt kit power pack Tank capacity 12 lt.	Art.14600001 Electric panel control	Art.14600002 Stop cylinder stroke pull-type	Art.21050551 Cylinder Course 1050 Exten 5 Capacity 5000 kg	Art.14121000 Hydraulic pipe 1/2"
				
Art.20020040 Brackets Ø40				
Art. 14000002				

Art.14600012 12 Volt kit power pack Tank capacity 12 lt.	Art.14600001 Electric panel control	Art.14600002 Stop cylinder stroke pull-type	Art.21050551 Cylinder Course 1050 Exten 5 Capacity 5000 kg	Art.14121000 Hydraulic pipe 1/2"
				
Art.20020140/1 Brackets Ø40 with plate		Art.20010003/V Cradles painted		
Art. 14000003				

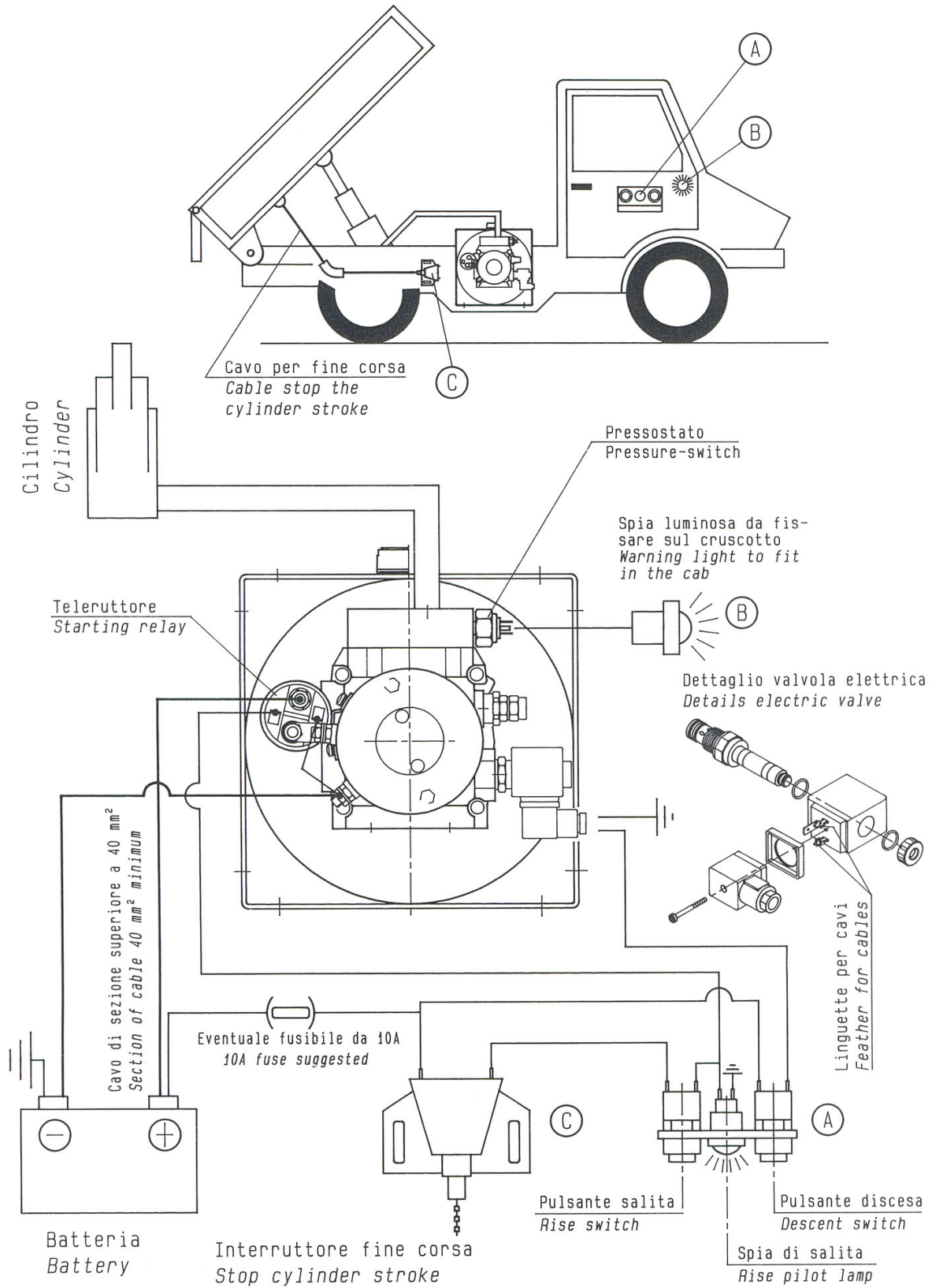
Art.14600012 12 Volt kit power pack Tank capacity 12 lt.	Art.14600001 Electric panel control	Art.14600002 Stop cylinder stroke pull-type	Art.21050551 Cylinder Course 1050 Exten 5 Capacity 5000 kg	Art.14121000 Hydraulic pipe 1/2"
				
Art.20020140/1 Brackets Ø40 with plate		Art.20010003/V Cradles painted	Art.14600006 Remote control	
Art. 14000004				

* Ogni equipaggiamento verrà confezionato all'interno di una scatola di dimensioni 30x60 H=60

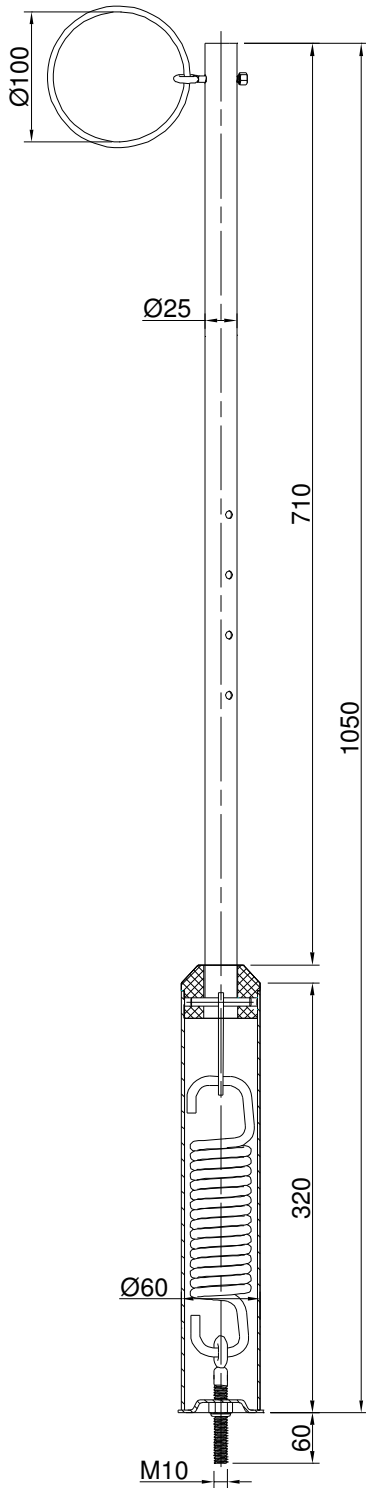
* Each equipment will be packed inside one box of sizes 30x60 H=60.



SCHEMA DI COLLEGAMENTO CENTRALINA CON SCARICO A COMANDO ELETTRICO
INSTALLING SCHEME FOR POWER PACK WITH UNLOADING ELECTRIC VALVE



Asta porta tubi
Connecting bar for pipe
Art. 19000514 - 2,600 kg



Utilizzo
Utilization

